



Mittal Institute of Education

(Approved by NCTE, New Delhi & Affiliated to BU, Bhopal M.P.) Opposite Bhopal
Memorial Hospital & Research Center Navy Bag, Bhopal – 38

Ph. 0755-298003

E-mail: miebpl2009@gmail.com

Session 2022-2023



REPORT ON INTERNAL EXAM 2022-23

The internal assessment helps to give credit in the final assessment. Also, it reduces the burden and tension related to the final examination. In addition, it acts as a link which provides data related to student's performance. This gives teachers an opportunity to evaluate the students.

Internal assessment is the process in which the teachers judge the students' performance on the basis of his performance.

Mittal Institute of education has been planned internal assessments by taking exams every year. It was for all the branches.

Summery

Third Year

S N	Branch	Total number of students	Present	Absent
1	B.Sc.(life science)	29	24	5
2	B.Sc.(Maths)	8	8	nil
3	BCA	2	0	0
4	BBA	17	15	2
5	B.Com	65	61	4

Second Year

SN	Branch	Total number of students	Present	Absent
1	B.Sc.(life science)	36	33	3
2	B.Sc.(Maths)	20	12	8
3	BCA	4	4	Nil
4	BBA	49	42	7
5	B.Com	93	88	4

First Year

SN	Branch	Total number of students	Present	Absent
1	B.Sc.(life science)	66	59	7
2	B.Sc.(Maths)	11	11	Nil
3	BCA	5	5	Nil
4	BBA	54	50	4
5	B.Com	78	73	5



GPS Map Camera



भोपाल,MP,भारत

Nanbi Bagh, भोपाल, 462038, MP, भारत

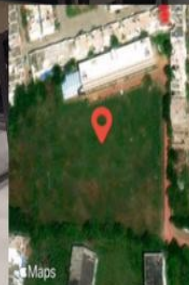
Lat 23.311372, Long 77.413627

12/19/2022 12:00 PM GMT+05:30

Note : Captured by GPS Map Camera



GPS Map Camera



भोपाल,MP,भारत

Nanbi Bagh, भोपाल, 462038, MP, भारत

Lat 23.310902, Long 77.413409

12/19/2022 12:02 PM GMT+05:30

Note : Captured by GPS Map Camera